

Reasoning Previous Year Question & Answers

Question 1. Select the related word/letters/number from the given alternatives.

Cell : Cytology:: Birds: ?

- a. Odontology
- b. Mycology
- c. Ornithology
- d. Etymology

Ans. Ornithology

Explanation: Cytology is the branch of biology concerned with the structure and function of plant and animal cells. Similarly, Ornithology is the scientific study of birds. Hence, option(c.) is the correct answer.

Question 2. Select the related word/letters/number from the given alternatives.

DHLP:WSOK::FJNR: ?

- a. UQMI

b. TPLH

c. SOKG

d. VRNJ

Ans. UQMI

Explanation: Refer the following table to solve the stated problem and match the corresponding letter to find the answers-

A	B	C	D	E	F	G	H	I	J	K	L	M
Z	Y	X	W	V	U	T	S	R	Q	P	O	N

Hence, FJNR -----> UQMI.

Question 3. Select the related word/letters/number from the given alternatives.

2:10::26:?

a. 50

b. 36

c. 42

d. 20

Ans. 50

Explanation: 2: 10 ----> $[(1)^2+1]: [(3)^2+1]$;

Similarly, 26: ? -----> $[(5)^2+1]: [(7)^2+1]$;

Hence, the correct answer will be $(7)^2+1 = 50$;

Question 4. Find the odd word/letters/number pair from the given alternatives.

a. EHJ

b. JML

c. PSR

d. VYX

Ans. EHJ

Explanation: All except EHJ follows the same trends-

J --- (+3)-----> M -----(-1)-----> L;

P--- (+3)-----> S-----(-1)-----> R;

V--- (+3)-----> Y-----(-1)-----> X;

While, E--- (+3)-----> H--- (+2)-----> J;

Hence, option (a.) is the correct answer.

Question 5. Find the odd word/letters/number pair from the given alternatives.

a. Tomcat

b. Baby

c. Fawn

d. Cub

Ans. Baby

Explanation: All except baby are related to the young animals. Hence, option(b.) is the correct answer.

Question 6. Find the odd word/letters/number pair from the given alternatives.

a. 11

b. 17

c. 19

d. 21

Ans. 21

Explanation: All except 21 are prime numbers. Hence, option (d.) is the correct answer.

Question 7. Arrange the following words as per order in the dictionary.

1. Patriot 2. Pastor 3. Patron 4. Pattern 5. Pastern

a. 5,2,3,1,4

b. 5,2,1,3,4

c. 5,2,4,1,3

d. 5,2,4,3,1

Ans. 5,2,1,3,4

Explanation: The ascending order of the given English words as per the dictionary is as follows-

Pastern (5) > Pastor (2) > Patriot (1)> Patron (3)> Pattern(4).

Question 8.A series is given below with one term missing. Choose the correct alternative from the given ones that will complete the series.

SCD, TEF, UGH, ?, WKL

a. CMN

b. VJI

c. VIJ

d. IJT

Ans. VIJ

Explanation: SCD -----(+1)(+2)(+2) -----TEF -----(+1)(+2)(+2) -----UGH-----(+1)(+2)(+2)
-----VIJ-----(+1)(+2)(+2) -----WKL.

Question 9.A series is given below with one term missing. Choose the correct alternative from the given ones that will complete the series.

124, 235, 346, 457, ?

a. 455

b. 465

c. 565

d. 568

Ans. 568

Explanation:

124

-----(+1)(+1)(+1)-----235-----(+1)(+1)(+1)-----346-----(+1)(+1)(+1)-----457-----(+1)(+1)(+1)-
-----568;

Question 10.F is the brother of A. C is the daughter of A. K is the sister of F, G is the brother of C. Who is the uncle of G?

a. A

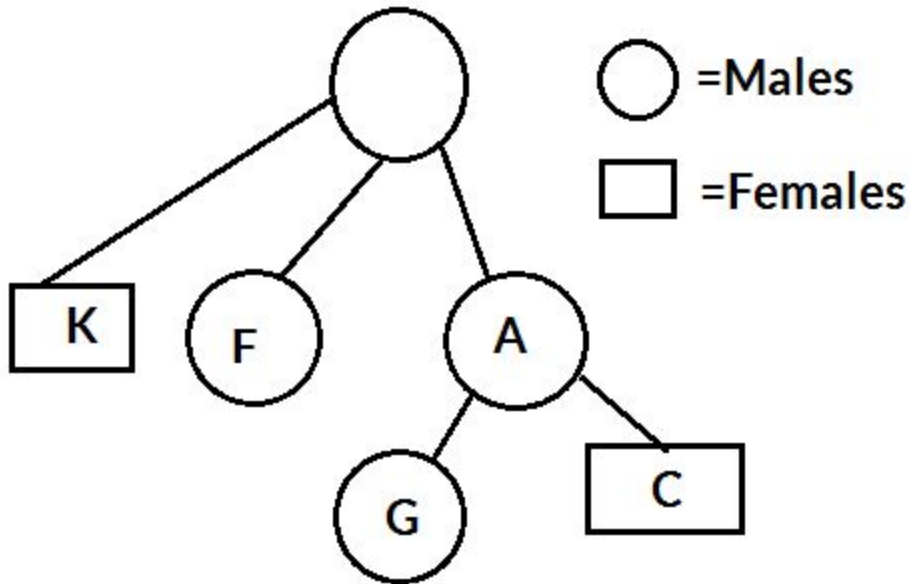
b. C

c. K

d. F

Ans. F

Explanation: From the given figure, it is clear that the F is the uncle of G.



Question 11.If Jhansi is 12 ahead in rank of Prabha, who ranks 15th from last, then how many students are there in the class if Jhansi ranks 4th in order of merit ?

- a. 23
- b. 27
- c. 30
- d. 31

Ans. 30

Explanation: Jhansi will be at = $12 + 15 = 27$ position from the last;

Hence, the total number of students in the class = $27 + 4 - 1 = 30$.

Question 12. From the given words, select the word which cannot be formed using the letters of the given word.

ENVIRONMENT

a. ENTER

b. METRE

c. IRON

d. MOMENTUM

Ans. MOMENTUM

Explanation: In the given word "ENVIRONMENT", there is no 'U' and 2 'M' in that. Hence, it is clear that option (d.) will be the correct answer.

Question 13. If 'BASKET' is written as 'TEKSAB' how can 'PILLOW' be written in that code?

a. LOWPIL

b. WOLLIP

c. LOWLIP

d. WOLPIL

Ans. WOLLIP

Explanation: 'TEKSAB' is the reverse of 'BASKET'. Similarly, the reverse of 'PILLOW' will be 'WOLLIP'.

Question 14. If '+' means '-' and '-' means 'x', 'x' means '÷' and '÷' means '+' then $2 \div 6 \times 6 \div 2 = ?$

a. 1

b. 0

c. 10

d. 5

Ans. 5

Explanation:

$$= 2 \div 6 \times 6 \div 2;$$

After replacing these signs with the given direction-

$$= 2 + 6 / 6 + 2 = 2 + 1 + 2 = 5;$$

Question 15. If $6 \times 9 \times 3 = 963$ and $4 \times 8 \times 5 = 845$, then $9 \times 4 \times 7 = ?$

a. 974

b. 479

c. 497

d. 749

Ans. 497

Explanation: In the given sequence, middle digit is kept in first place in the RHS, first digit is kept in middle and last digit is kept in the last. Hence, option (c.) is the correct answer for the given problem.

Question 16. Select the missing number from the given responses:

3	5	9
4	6	?
3	7	2
36	210	36

a. 4

b. 3

c. 2

d. 1

Ans. 2

Explanation: in first column, $3 * 4 * 3 == 36$;

In second column, $5 * 6 * 7 == 210$;

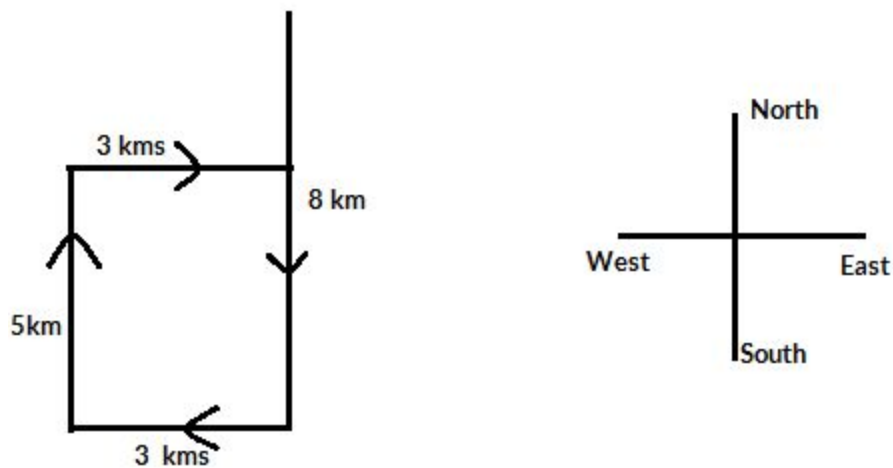
In third column, $9 * x * 2 = 36$; $\Rightarrow x = 2$;

Question 17. Ashok went 8 kms south and turned west and walked 3 kms. Again he turned north and walked 5 kms. He took a final turn to east and walked 3 kms. In which direction was Ashok from the starting point?

- a. East
- b. North
- c. West
- d. South

Ans. South

Explanation: from the figure given below, it is clear that Ashok will be in South direction from the starting point.



Question 18. Consider the given statement/s to be true and decide which of the given conclusions/assumptions can definitely be drawn from the given statement.

Statement: Ahimsa should be basic principle of human beings. All of us should practice Ahimsa.

Conclusions: I. We all know the real meaning of Ahimsa.

Conclusions: II. Ahimsa promotes global harmony.

a. only conclusion I follows

b. only conclusion II follows

c. Neither I conclusion nor II follows

d. Both conclusion I & II follow

Ans. Neither I conclusion nor II follows

Explanation: The given statement is the suggestion. While, Both conclusions are assumptions. Hence, option (c.) is the correct answer.

Question 19. Of a cubical container, all the six faces have different markings indicating the position of the equipment packed inside. Which symbol is opposite the face having C?

a. Z

b. B

c. X

d. Y

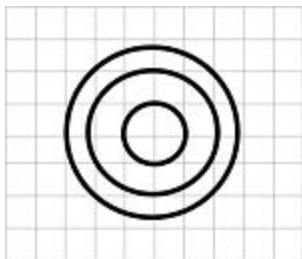
Ans. Z

Explanation: From first two figures, we can conclude that marking 'X' and 'B' are just opposite to each other. From last two figures, it can be concluded that 'A' & 'Y' and 'C' & 'z' are opposite to each other. Hence, option (a.) is the correct answer.

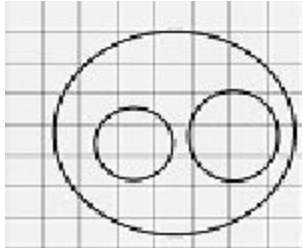
Question 20. Identify the diagram that best represents the relationship among classes given below

Minutes, Days, Months

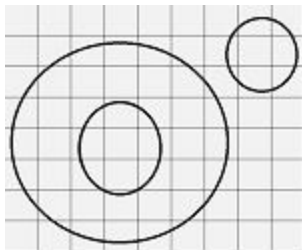
a.



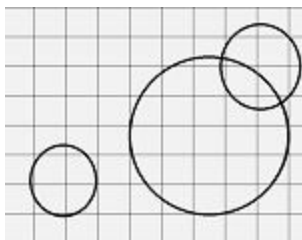
b.



c.



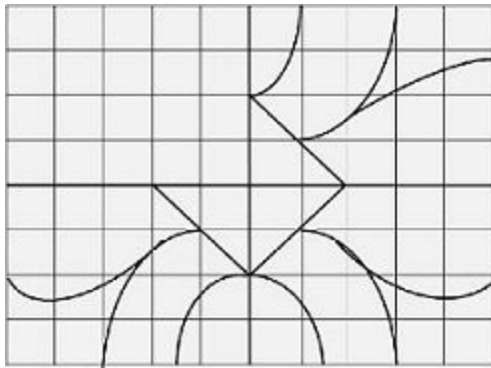
d.



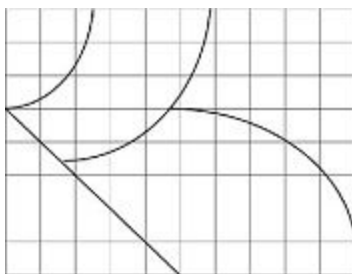
Ans. a.

Explanation: In a month, there are 30/31 days and in 1 day, there are 720 minutes. Hence, option (a.) is the correct answer.

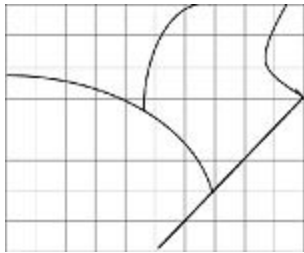
Question 21. Which answer figure will complete the pattern in the question figure?



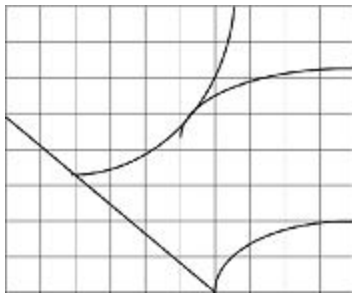
a.



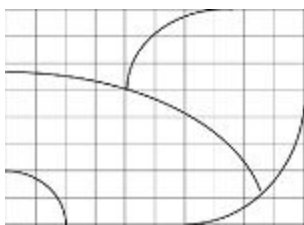
b.



c.



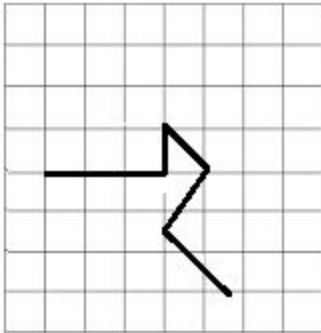
d.



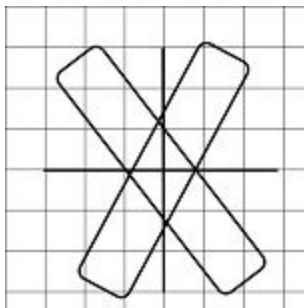
Ans. b.

Explanation: divide the whole image in quadrants, the image in second quadrant will be the mirror image of fourth quadrant. Hence, option (b.) is the correct answer.

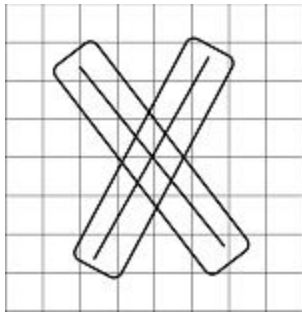
Question 22. From the given answer figures, select the one in which the question figure is hidden/embedded.



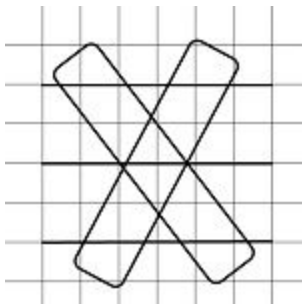
a.



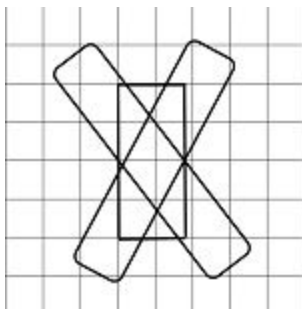
b.



c.



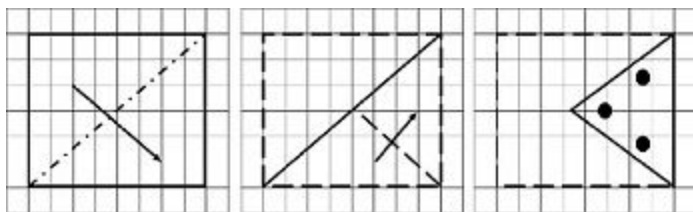
d.



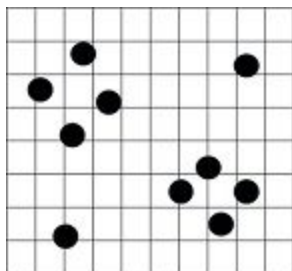
Ans. a.

Explanation: Superimpose the given problem figure on every optional figures, you can easily find that option (a.) is the most appropriate answer.

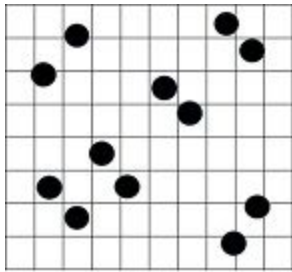
Question 23. A piece of paper is folded and cut as shown below in the question figures. From the given answer figures, indicate how it will appear when opened



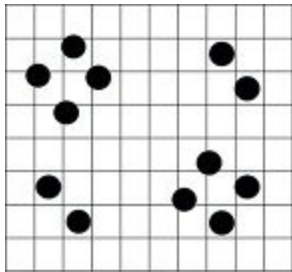
a.



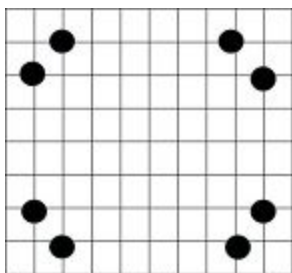
b.



c.



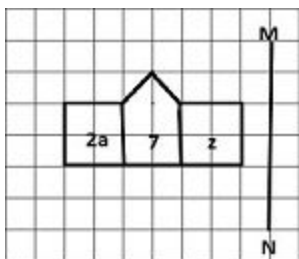
d.



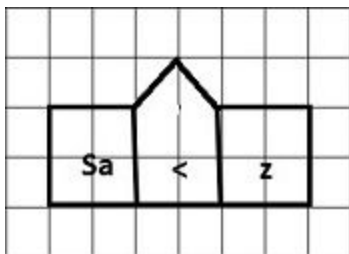
Ans. b.

Explanation: If you reverse the punching process, then you will find that the right answer will be option (b.).

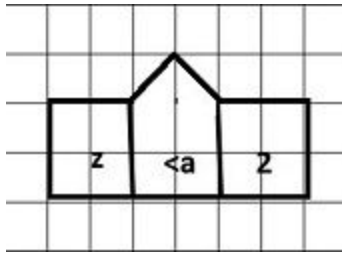
Question 24. If a mirror is placed on the line MN, then which of the answer figures is the right image of the given figure?



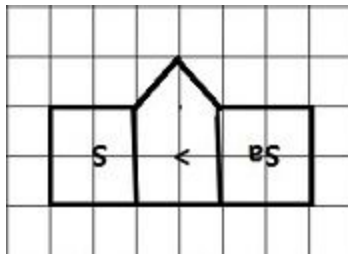
a.



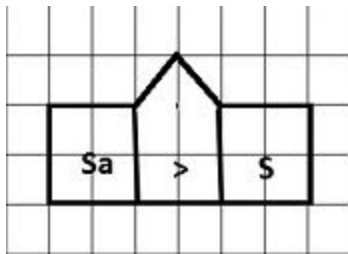
b.



c.



d.



Ans. c.

Explanation: in mirror image, object is inverted by 180 degrees. Hence, option (c.) is the correct answer.

Question 25.In the question, a word is represented by only one set of numbers as given in any one of the alternatives. The sets of numbers given in the alternatives are represented by two classes of alphabets as in two matrices given below. The columns and rows of Matrix I are numbered from 0 to 4 and that of Matrix II are numbered from 5 to 9. A letter from these matrices can be represented first by its row and next by its column, e.g., G can be represented by 03, 12, etc., and 'L' can be represented by 57, 65, etc. Similarly you have to identify the set for the word 'DATE'

0	0	1	2	3	4
O	D	T	S	G	N
1	T	S	G	N	D
2	S	G	N	D	T
3	G	N	D	T	S
4	N	D	T	S	G

	5	6	7	8	9
5	A	E	L	K	I
6	L	K	I	A	E
7	K	I	A	E	L
8	E	L	K	I	A
9	I	A	E	L	K

a. 23, 68, 24, 97

b. 14, 96, 11, 85

c. 23, 96, 40, 85

d. 32, 89, 10, 68

Ans. 23, 68, 24, 97

Explanation: Let us find all coding of the word DATE.

D= 00, 14, 23, 32, 41;

A= 55, 68, 77, 89, 96;

T= 01, 10, 24, 33, 42;

E= 56, 69, 78, 85, 97;

Hence, the correct answer among the given options will be option (a).